



Simplify Identity Management

Redefining Security for Organizations of all Sizes

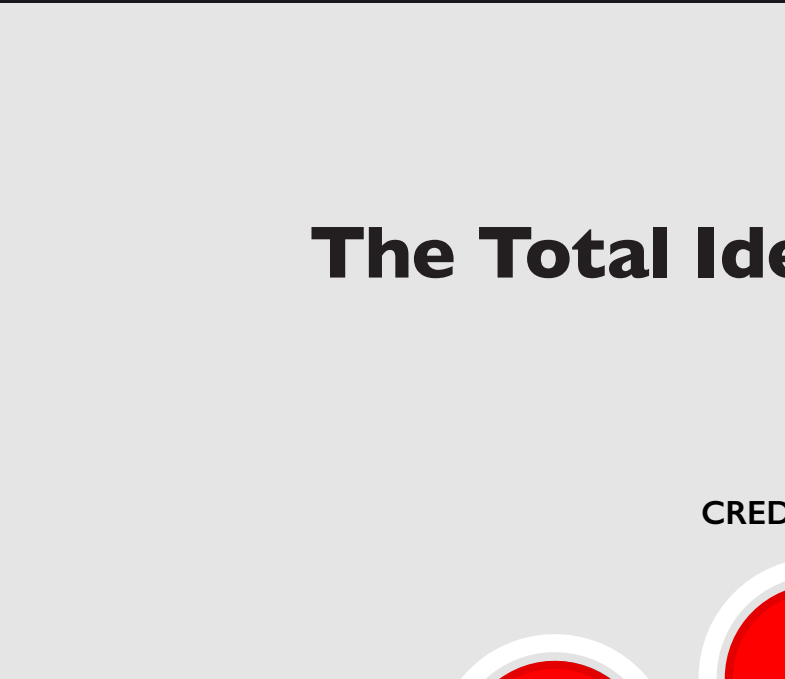
Simplifying Identity Management for Enterprises

Control Who Accesses What, When, and for How Long

Symmetry™ CONNECT is a modern solution for managing physical identities and access control. Tailored for medium and large enterprises, organizations can automate workflows, reduce administrative overhead with improved workflows, and ensure compliance with internal and external regulations.

By automating identity management, Symmetry CONNECT minimizes redundancies, reduces costly mistakes, and eliminates time-consuming paperwork. With simplified onboarding, enforced policy compliance, and a dramatic reduction in manual errors, your organization can focus on what matters most.

THE RESULT? Faster responsiveness, improved security, and significantly reduced costs—delivering peace of mind while positioning your business for success.



Automated Identity Workflows

Automate the entire identity lifecycle from onboarding to offboarding.

Centralized Policy Management

Manage access policies across multiple locations and systems from a single platform.

Self-Service Access Requests

Empower employees to request access and manage profiles.

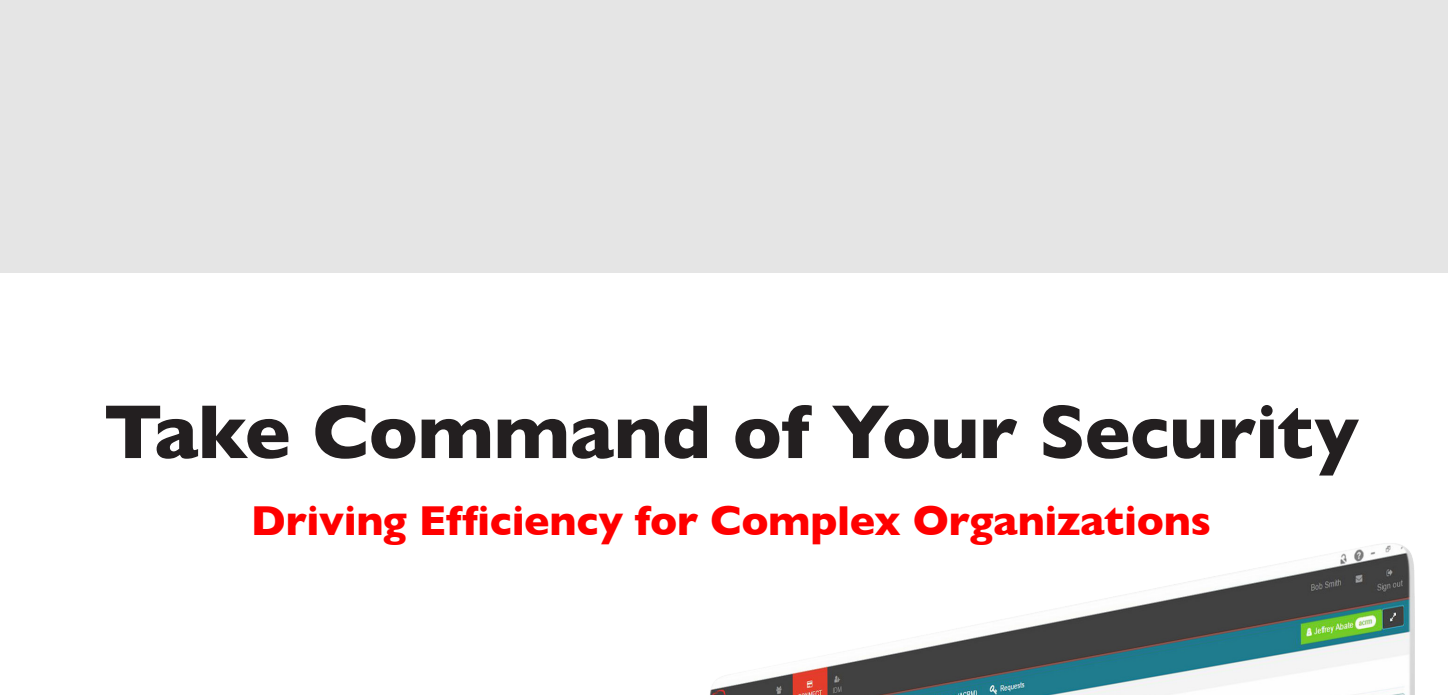
Seamless Integration

Easily integrate with existing IT, HR, and security systems.

Audit and Compliance

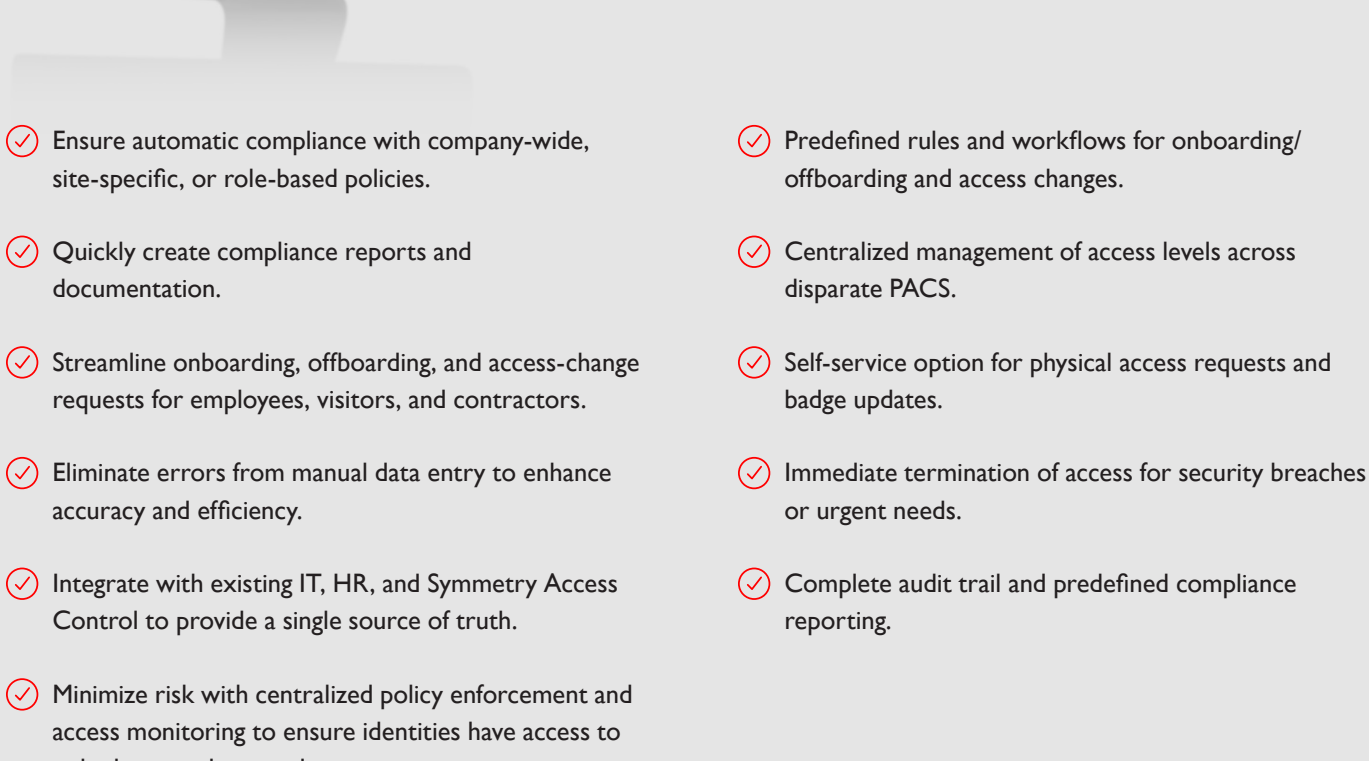
Quickly meet compliance requirements with advanced reporting.

The Total Identity Solution



Take Command of Your Security

Driving Efficiency for Complex Organizations

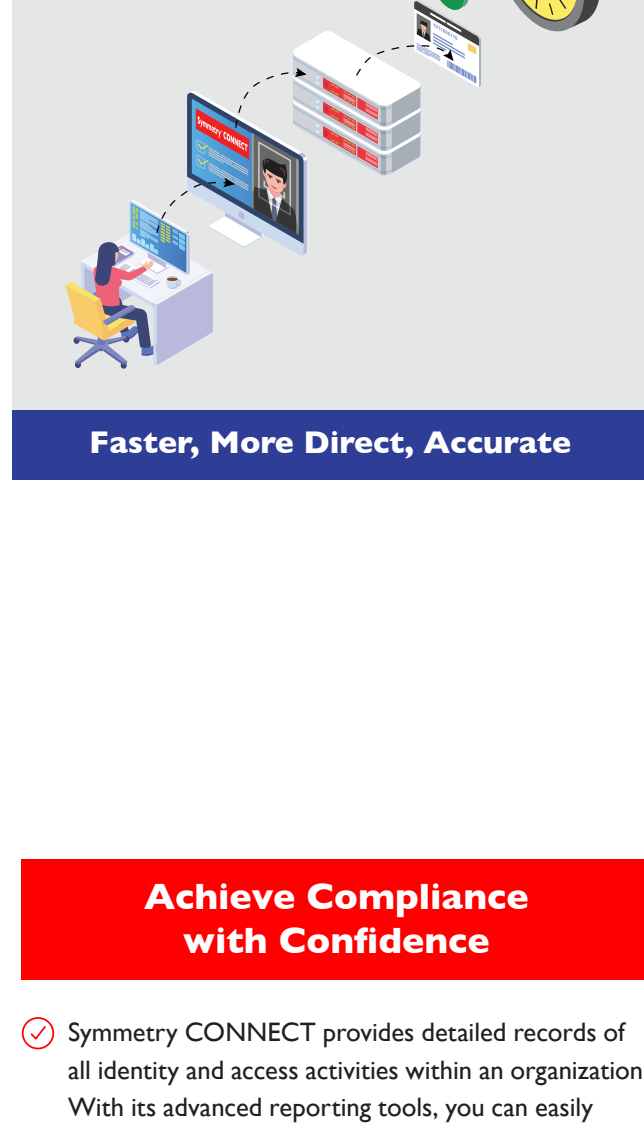


- ✓ Ensure automatic compliance with company-wide, site-specific, or role-based policies.
- ✓ Quickly create compliance reports and documentation.
- ✓ Streamline onboarding, offboarding, and access-change requests for employees, visitors, and contractors.
- ✓ Eliminate errors from manual data entry to enhance accuracy and efficiency.
- ✓ Integrate with existing IT, HR, and Symmetry Access Control to provide a single source of truth.
- ✓ Minimize risk with centralized policy enforcement and access monitoring to ensure identities have access to only the area they need.
- ✓ Predefined rules and workflows for onboarding/offboarding and access changes.
- ✓ Centralized management of access levels across disparate PACS.
- ✓ Self-service option for physical access requests and badge updates.
- ✓ Immediate termination of access for security breaches or urgent needs.
- ✓ Complete audit trail and predefined compliance reporting.

Onboarding and Offboarding

Managing identities for employees, contractors, vendors, and visitors used to involve multiple forms, emails, calls, and approvals, often dragging on for days or weeks. But with Symmetry CONNECT Identity Management, your organization can securely and consistently accomplish these tasks and more in minutes.

- **Faster Access**
Timely access provisioning ensures new employees have the right access to perform their roles from day one without unnecessary delays. Delays hinder productivity, so they can request the access they need, when needed, without delay.
- **Clear Control**
Assign access based on roles, minimizing the risk of over-provisioning or unauthorized access. Role-based access control enhances compliance and reduces human error.
- **Secure Start**
Onboarding is an opportunity to enforce security policies and train employees on proper access protocols which establishes a security-first mindset company culture.
- **Smooth Changes**
When an employee is promoted or transfers departments, new access is added promptly, and old access is removed to prevent unauthorized access.
- **Reduced Risk**
With immediate removal of access to facilities, systems and data prevents former employees or contractors from exploiting their credentials. Delayed or incomplete offboarding increases the risk of insider threats and data breaches.
- **Regulatory Ready**
Offboarding ensures compliance with regulatory requirements by documenting the termination process and revoking access rights, reducing the risk of penalties and improving audit readiness. Overlooking offboarding can lead to dormant accounts or active credentials being misused.



Self-Service Requests

- ✓ Automating access request approvals and changes reduces the manual workload and speeds up the process.
- ✓ Requests are routed through predefined workflows, eliminating bottlenecks and improving response times.
- ✓ Employees can easily request new or replacement credentials, so they can request the access they need, when needed, without delay.
- ✓ Designated requests can be configured to be auto approved, streamlining the process further.

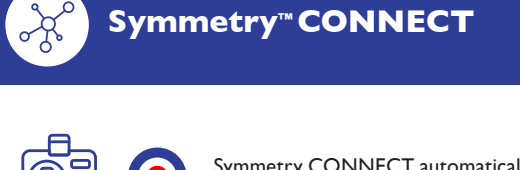
Seamless Integration with the Symmetry Ecosystem

- ✓ Symmetry CONNECT seamlessly integrates with Symmetry Access Control and Symmetry GUEST Visitor Management, as well as many third-party workflow software systems.
- ✓ Robust compatibility allows organizations to streamline their security operations by unifying identity management with their existing IT and HR systems.
- ✓ By integrating with AMAG Technology's hardware and other leading security products, Symmetry CONNECT provides a comprehensive solution that enhances operational efficiency, improves security, and simplifies compliance management.
- ✓ Whether managing employees, contractors, or visitors, Symmetry CONNECT ensures that every aspect of identity management is securely and effectively coordinated across all platforms.

Achieve Compliance with Confidence

- ✓ Symmetry CONNECT provides detailed records of all identity and access activities within an organization. With its advanced reporting tools, you can easily access "who, what, where, and why" reports, offering full visibility into authorization details. This level of insight empowers security teams to make informed decisions and quickly respond to any unauthorized access or anomalies.
- ✓ Symmetry CONNECT's predefined reporting tools streamline compliance audits, making the process efficient and straightforward. The platform allows you to schedule audits based on your organization's needs and requirements, automating the recertification process to ensure continuous compliance. Automating these essential tasks allows your organization to reduce the risk of falling out of compliance and focus on other critical security initiatives.

Designed with regulated industries—such as financial services, electrical power, healthcare, and oil and gas—in mind, Symmetry CONNECT helps maintain compliance with key standards and regulations, including:



Its robust reporting capabilities are tailored to satisfy even the most stringent audit and compliance demands, ensuring your organization stays secure and compliant in an ever-evolving regulatory landscape.

The Old Way

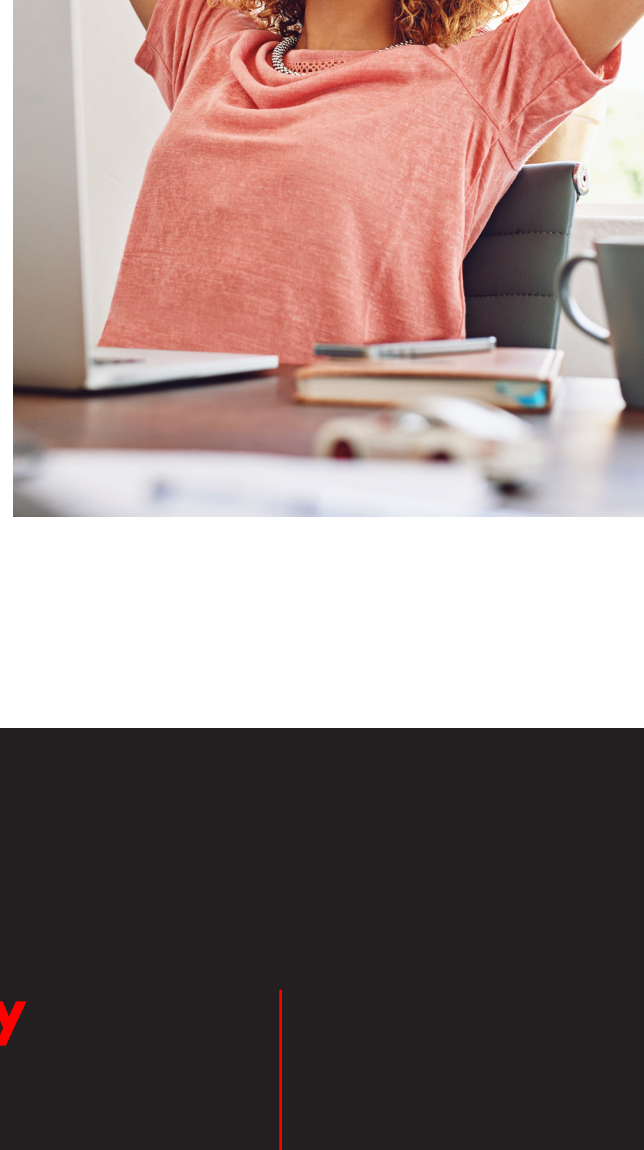


Slow, Indirect, Less Accurate

Symmetry™ CONNECT



Reinforce Compliance with Symmetry CONNECT



Take Control of Identity Management Today

Join organizations around the world in transforming how they manage identities and access. Experience the future of identity management with Symmetry CONNECT.

Los Angeles
United States Headquarters
2205 W. 126th Street Unit B
Hawthorne, CA 90250
☎ 1-800-889-9138
✉ sales@amag.com

United Kingdom
International Headquarters
Challenge House International Drive
Tewkesbury Glos. GL20 8UQ
☎ +44 (0) 1684 850977
✉ international@amag.com

Boston
AMAG Technology
6 Omni Way
Chelmsford, MA 01824
☎ 1-800-889-9138
✉ sales@amag.com

