

CollegeNet 25 Live

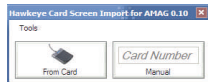
Hawkeye 25Live Interface is a Windows service that downloads the 25Live event calendar, including classes, meetings and special events. It keeps only the associated doors unlocked during the scheduled events, and locks them again after the events have concluded. Canceled events are automatically removed from the unlock queue and certain event types like "maintenance" can be configured to be ignored by the interface.

A "Lockdown" feature can be invoked that locks all doors the interface currently has open in the case of emergencies. After the emergency, Lockdown is disabled and all scheduled doors unlock and operations continue as normal.

Improve building security by reducing unnecessary unlocked doors, and keep security guards busy being guards and not traveling doormen. Attendees of late night events that are sometimes overlooked will also be grateful.

Card Screen Import

Hawkeye Card Screen Import can be used for migrating Card Holders from an existing SMS system to a new one. The user's card can be presented to a desktop card reader, or entered manually, and the utility downloads all the Card Holder details, face and Personal Data, from the existing system over a network. It populates this directly into a SMS Card Holder Definition screen.



Banner

Hawkeye Banner Interface is a Windows service that imports data from the Banner database into Symmetry .

HR administration is done through Banner and imported into the Symmetry card holder database, so only one system has to be maintained.



Student card holder records can be added, deleted or modified in the Symmetry database through the Banner Interface. The interface provides for user configurable field mapping and interface settings.

Banner software is used by hundreds of colleges across the country.

Commend Intercom

Symmetry has native support for several intercom systems, but when a site uses hardware that is not natively supported, we are often called to extend the list of SMS supported devices.



Commend is the fastest growing intercom manufacture with over 30,000 installations.

Our Commend interface populates the SMS Command Center with the necessary RS232 messages required to initiate intercom calls, and listens to Command hardware to create Alarms/notifications in SMS clients when calls come in. Incoming calls can also be linked to Triggered Commands for such things as CCTV camera call up.

Every security site has unique needs, and we are closely positioned with AMAG to help you meet those needs and make your site run the way you want it to. Some examples of our custom software include real-time existing database integration, video gate checking, credential and muster-based exit control, hardware interfaces, advanced auditing and custom reports. .

Hawkeye Technologies has been creating add ons and integrations for AMAG's Security Management Software for more than 10 years.

Our newest product, Hawkeye Mobile, will give you the power of a Symmetry client in your hand, anywhere you go. In real time you can verify and manage cards, work with alarms, control field hardware with command center and view live video from Axis and Sony IP cameras.

Hawkeye Mobile is fully integrated with Symmetry Muster and functions as an In or Out reader while displaying the Muster list.



Colored Muster

Hawkeye Colored Muster is a full screen application that will display card holders "In" the designated location based on a "value" entered into a Personal Data field such as "Company".



Colors are assigned to each value so a quick glance at a wall mounted monitor allows people to see who's "In" the area and what category they're associated.

Selecting In and Out card readers as well as the color assignment is done through a user interface.

Vacancy

Hawkeye Vacancy limits the total numbers of cards per organization that can occupy a defined area, such as a parking garage. The Organization, Access Code In, Access Code Out, and Max Count are defined by the settings application per area.



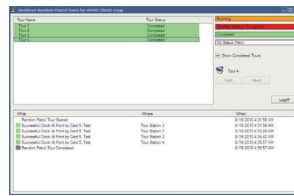
A tally is kept as cars enter and exit each area and when an organization hits its defined limit, the Access Code In of all cards in that organization for that area is removed and added back when the limit drops below the Max Count.

Multiple areas can be defined, and organizations can be assigned multiple areas.

Hawkeye Vacancy reviews recent history when the application starts to determine the current counts and also allows for manually adjusting the counts if required.

Random Patrol

The Patrol Tour function in Symmetry requires hitting the list of tour readers sequentially, which can be a problem at places like prisons where it is possible to memorizing a guard's routine. Our Random Patrol Tours application allows guards to hit the tour readers in any order they please. The tour is started when the guard first swipes his card at a tour reader. Minimum and maximum timeouts can be set between tour reads. One guard can start a tour and another can complete it, adding more randomness.



A client application is used for viewing and controlling the status of tours. A user logs onto the client application with the same username and password they use for Symmetry. Tour visibility can be controlled by username and user role, so users in different areas of a building only need to be concerned with the tours they are responsible for. Tour transactions and alarms are recorded in the Symmetry transaction database.

Clean Room

Hawkeye Clean room is a way of controlling Card Holder's paths throughout a building. A good example of this is a clean room or dirty room situation, where if a person enter a dirty room, they can't enter the clean room until they enter a shower room, or until their card is reset by a timer. Another application could be a sensitive area room, where if a person enters a room with sensitive materials, then they can't exit the building until they enter a screening room.



ThyssenKrupp Destination Dispatch

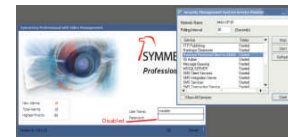
The Hawkeye TKI interface provides the support for ThyssenKrupp "smart" elevators to be used seamlessly in SMS. No outside configuration is necessary. Simply install the TKI service and name your Auxiliary Outputs and Readers with their corresponding Group (G), Landing (L) and Index (I) numbers as provided by ThyssenKrupp. Assign floors to Card Holders as you would normally in a conventional relay based controller. Elevators can be controlled manually with the Commend Center, or by using Scheduled and Trigger Commands.



Interfaces will be developed for Otis, Schindler, Kone and others as projects become .

Restricted Client

Hawkeye Restricted Client controls which users can log onto a SMS client by disabling the Password entry for any user that doesn't have an asterisk in their username.



This is being used at locations where it is mandated that computers that are in public areas that have a Symmetry client installed can only be logged on by users with restricted rights.

Usernames like "Restricted 1*" and "Restricted 2*" are created with limited User Role permissions, and only those users are allowed to log on to the system at the restricted terminals.