

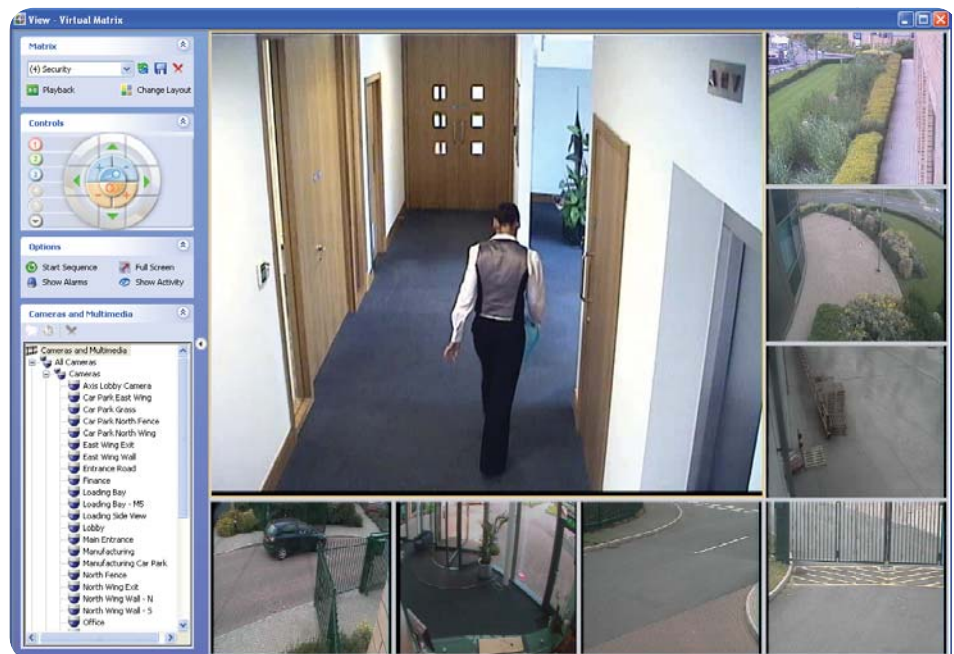
System Overview

Symmetry™ Video Management is an innovative open video management platform for both analog and digital video. The platform supports the migration from analog to digital for any size organization.

Support is provided for video from market leading digital video recorders, IP cameras and Symmetry Edge Network Video Servers (ENVS®) which can also provide peer to peer integration with multiNODE access control panels.

The Symmetry system provides a complete solution including powerful options for live video management and the centralized NVR storage of video from the Symmetry ENVS and MPEG-4 IP cameras.

Symmetry Video Management can expand the scope of the security management system into a truly seamless solution for access control, intrusion, identity management, biometrics and video.



Key Features

- Open Video Management solution for Symmetry ENVS, market leading DVR and IP cameras
- Live video review of up to 72 concurrent cameras per client PC
- Managed, indexed storage of MPEG-4 video from the Symmetry ENVS and IP cameras
- Event tagging integrated with Intrusion and Access Control
- Alarms Management including video loss alarms
- Graphical Maps with interactive video control
- Review stored video from DVR, IP camera archive and video server storage on Symmetry NVR
- Instant-replay of recently recorded video
- Record Now feature allows guards to initiate recording
- Flexible on Event presentation of video
- Motion detection supported as standard from the Symmetry ENVS
- Integrated HTML Web Page support in virtual matrix
- Operator permissions for individual cameras and stored views
- Automated sequencing facility
- Supports Pan Tilt Zoom
- Management Reports
- Export video to CD or DVD for archiving
- Still image capture and export from MPEG-4 video
- Graphical time and calendar based configuration on frame rate, resolution, presets and other features
- Multi-user system for up to nine client PCs
- Multiple Client Monitor Support
- Activity logging and audit trail of configuration changes and operator activity
- Multi-company partitioning
- Seamless integration with all other modules of the security management system

Specifications

PC Requirements:

Client PC requires minimum Pentium 4 with 512 MB RAM. Additional processing power required for advanced applications.

Server specification depends on number of cameras. Refer to the video design guide.

Storage: DVR data remains on the DVR; Symmetry ENVS and selected MPEG-4 cameras archive to open selection of hard drives, storage arrays, Network Attached Storage or Hierarchical Storage Management solutions.

Video Hardware Support

Digital Video Servers:

Symmetry Edge Network Video Servers (ENVS)

Digital Video Recorders:

Models from the following market leading manufacturers:

- Bosch Divar
- Cieffe
- Dedicated Micros
- Integral
- Nice
- Pelco DX8100
- Verint

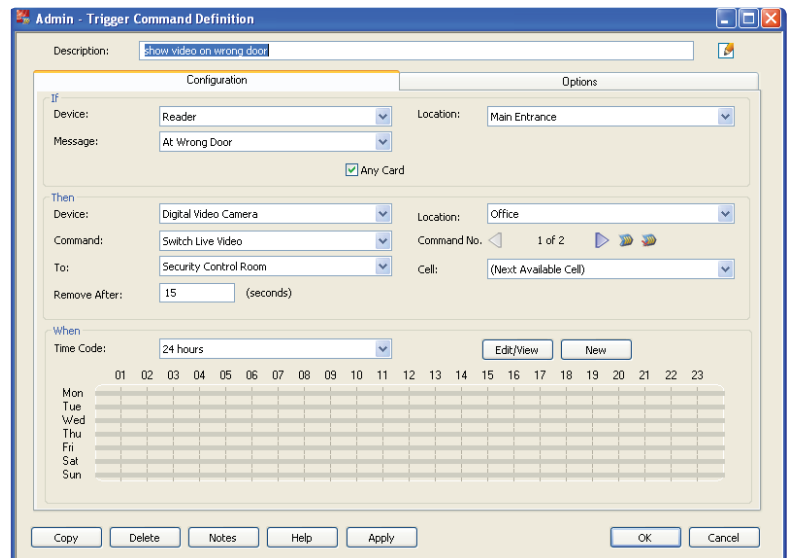
IP Cameras:

Selected M-JPEG and MPEG-4 cameras (data storage for MPEG-4 only)

- AXIS
- Bosch
- Sony
- Bosch
- Panasonic and more

Ordering Information

- Requires Symmetry Professional or Symmetry Enterprise v6.0 or later pre-installed
- Symmetry client licenses allow full video operation. Additional client licenses available
- Available with 4, 8, 16, 32, 128 or 256 camera licenses to suit requirements
- NVR storage module available for recording of data from Symmetry ENVS or MPEG-4 IP cameras



AMAG Technology Inc. is a subsidiary of Group 4 Technology Ltd. ©COPYRIGHT AMAG TECHNOLOGY INC. 2009

G4Tec is a Microsoft Gold Certified Partner for Security Solutions. Symmetry, ENVS, and TLM are registered trademarks of Group 4 Technology Ltd. Microsoft is a registered trademark of Microsoft Corporation. All other brand names and product names are trademarks or registered trademarks of their respective owners.

Information contained in this literature is representative only and does not form part of a contract. Our policy is one of continuous product improvement and details may vary without notification. We are committed to providing defect-free products and services to our customers in partnership with equally committed suppliers and authorized dealers.

9700-1009
03/09