



Symmetry™ Product Portfolio Summary

Your Solution for Total Security Management

www.amag.com

Symmetry Product Portfolio Summary

G4Tec's range of Symmetry Security Management Systems provides powerful integrated solutions for organizations requiring automated security. Solutions are available for organizations of any size — from small offices requiring just a few card readers to large companies spread over multiple sites and countries.

With over 17,000 security systems installed worldwide, we are one of the leading security manufacturers in the world. We have over 30 years of experience in developing state of

- Access Control
- Video Management
- Intruder Detection
- Alarms Monitoring
- Intercom Control
- Web Access
- Visitor Management
- Badging
- Digital Video Recording
- Smart-Card Technology
- Control Panels
- Card Readers

the art hardware and software systems to secure everything from your local store to protecting some of the highest security establishments in the world. If you need a scaleable system that can grow as your company grows, our systems can expand to handle an unlimited number of employees spread over hundreds of sites. Our systems are designed to grow in scale and complexity as your organization evolves.

G4Tec has complete control over the design and manufacture of both the key hardware and software systems, which enables us to include features that may otherwise be difficult to implement, and to react quickly to customers' requirements. Our innovative, rapid development and forward thinking allows G4Tec to pioneer products at the forefront of the industry. Our products are designed with IT managers in mind, yet they are simple to learn, operate and install.

Our approach to system design is *choice*. G4Tec's access control, digital video, identity management and intrusions systems integrate with the latest innovations on the market to provide you with the best options and choices. We are always at the leading edge of all security management technologies to bring you the latest technology straight into your building.

G4Tec will continue to develop new products to encompass the latest technologies and integration. We're ahead of the pack, and that's where we intend to stay.

The Benefits

Using our Symmetry Security Management System helps you to:

- Improve security
- Reduce security manpower costs
- Effectively manage people
- Better control your business



AMAG Technology, Inc.
20701 Manhattan Place
Torrance, CA 90501

Phone: (800) 889-9138
Fax: (310) 834-0685
Website: www.amag.com



Symmetry Software Packages

One of three different types of software packages can be used:

- Symmetry Professional
- Symmetry Enterprise
- Symmetry Global

The choice of software package depends on the size of the system, with Symmetry Professional supporting the smallest systems, and Symmetry Global supporting the largest systems.

All three packages provide true client/server solutions, where each client PC communicates over the LAN, WAN or Internet with a single server machine that holds the system databases. Since the system has been designed to use minimal bandwidth, your existing network can be used, resulting in little or no additional networking costs. For small systems, a single PC can be used, acting as both the client and server.

All systems are qualified on Microsoft® Windows® operating systems and provide a graphical user interface that minimizes training needs for users. The system employs the very latest thinking in user-interface design. Features such as customizable toolbars, wizards, icons, tree views and drag and drop techniques make the user interface intuitive and simple to use. Extensive online help gives instant information about the task that is being carried out.

What's in our Symmetry Security Management System?

- Symmetry Professional, Symmetry Enterprise or Symmetry Global (The PC-based security management software)
- One or more Symmetry multiNODE Controller units
- A reader for each access-controlled area
- An integrated security management system including Biometrics, Smart Card, Intruder 3rd Party Systems

At the heart of all Symmetry software packages is the powerful Microsoft SQL Server database engine which provides high levels of performance for systems of any size. The Symmetry Professional software uses the Desktop Engine version of the software which is freely available and supplied on the installation CD. The database engine has the advantage of being highly scalable, enabling you to expand the system to any size as your requirements grow.

SOFTWARE PACKAGE	MAX NUMBER OF READERS	MAX NUMBER OF CLIENT PCs	MAX NUMBER OF CARDS	NOTES
Symmetry Professional	512	9	Unrestricted	A true client / server system for systems requiring no more than 512 readers. The server can also be used as a client.
Symmetry Enterprise	Unrestricted	Unrestricted	Unrestricted	Uses Microsoft SQL Server on a dedicated server. Optimized for a very large number of card holders across a LAN or WAN. Supports clustered servers for "fail over" contingency.
Symmetry Global	Unrestricted	Unrestricted	Unrestricted	Builds on Symmetry Enterprise to provide enhanced capabilities for remote management of multiple systems spread over a number of geographically separate sites. Enables central card handling from a single site.





Security Management Software

Your Solution for Total Security Management

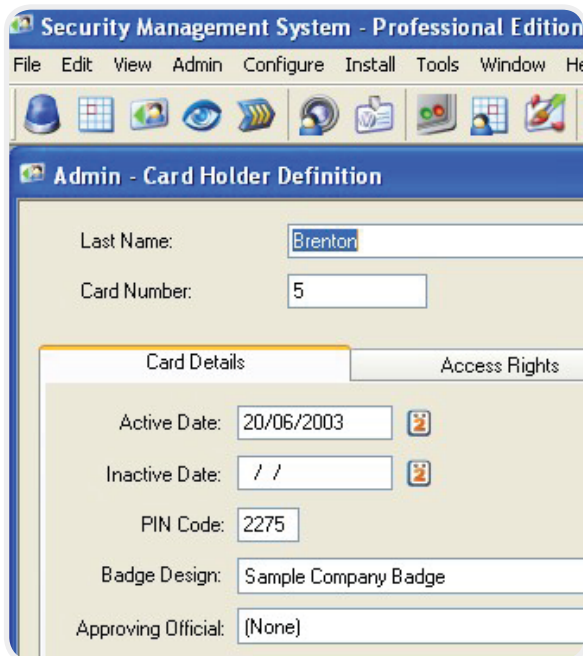
www.amag.com

Symmetry Security Management Software

Each client PC runs the Symmetry Security Management software, the application that allows you to configure, monitor and control the security management system. The software lets you set up card holders, assign access rights, produce reports, monitor alarm conditions and control hardware such as cameras and readers. The Symmetry Security Management software includes an extensive range of standard features.

The ability to customize the system to show only those features that your users require ensures that operator training is kept to a minimum and allows users who have different requirements to be presented with different features. The ability to customize the system in many other ways underlines the inherent flexibility of its design and ensures that the system performs to your exact requirements without compromising ease of use.

The Symmetry Security Management software has been designed to provide the most efficient system management with extensive and flexible reporting capabilities. The wide range of standard features ensures that you can obtain the full benefits from your investment.



Key Design Concepts

Symmetry hardware and software is based on these main design concepts:

- Ease of use
- Flexibility
- Scalability
- Open architecture
- Modularity

Symmetry Security Management Software

- Easy to use and up to date user interface
- Complete control of access rights (to specify who is allowed to go where and when)
- Easy card administration including bulk amendments
- Dynamic alarms management
- Graphical map interface
- Badge designing and printing
- Database partitioning (allows multiple companies to share the same system)
- Login permissions control user access to screens
- Extensive reporting options
- Visitor management
- Anti-passback management
- Straightforward control of hardware using manual and automated commands
- Comprehensive context-sensitive online help system



AMAG Technology, Inc.
20701 Manhattan Place
Torrance, CA 90501

Phone: (800) 889-9138
Fax: (310) 834-0685
Website: www.amag.com



Symmetry multiNODE Range of Controllers

The Symmetry multiNODE range of controllers provide the distributed intelligence for access control and alarms monitoring. Using the relevant rules set up on the client PCs, the Symmetry multiNODE Controllers manage the connected devices, including readers, locking devices, alarm sensors and auxiliary outputs. A Symmetry multiNODE Controller can operate offline from the client PCs to decide whether or not to grant access and can respond in the desired manner to any attempted access violation.

Online communication with the client PCs can be achieved using a LAN or direct RS232 link, or via dial-up modem for remote sites. Online access enables alarms monitoring, reporting and hardware control from any client PC.

The key design concept behind the Symmetry multiNODE hardware is modularity, which enables you to choose and purchase only those components that are actually required, right down to the PCB level. This approach leads to extremely cost-effective solutions that are tailored to your own requirements.

Symmetry multiNODE 2100 Controller

The Symmetry multiNODE-2100 is a modular range of intelligent controllers that provide very flexible configurations for up to:

- 16 Readers
- 96 Monitor Points
- 32 Auxiliary Outputs
- 200,000 Cardholders

The M-2100 is available in four models, supporting 20,000, 50,000, 100,000 and 200,000 cardholders to suit requirements.

Reader Technologies

The Symmetry M-2100 Controller supports a full range of reading technologies including Magstripe, Smartcard, Proximity, Biometrics and Wiegand (via Wiegand Interface Modules). Each Symmetry multiNODE can control alarm inputs, auxiliary outputs and readers, including our own ranges of magnetic stripe, proximity, smart-card and biometric readers, and other third-party Wiegand readers. The system can be expanded as required by using additional control units.

Further system flexibility is provided by a range of remote door/alarm units, which can be connected up to 3000 ft (1km) from the controlling database unit. The remote door/alarm units provide a cost-effective method of connecting doors and alarm sensors that are located across a wide area.

Symmetry multiNODE Controller Benefits

- Cost-effective modular design
- Easy to install
- Easy system expansion
- Compatible with a wide range of standard readers
- High levels of integration
- Flash memory reduces upgrade time
- Offline control
- Communications security
- UL-Listed variants

Card Readers

We manufacture a wide range of reliable, high-performance readers to meet all requirements.

Symmetry Series 600 Readers

Encompass our traditional range of magnetic stripe and proximity readers.

- Features mullion and keypad versions
- Compatibility with HID® format proximity cards
- Long read range proximity readers available
- Secure Pseudo-Random and Wiegand versions



Symmetry Series 700 Readers

Smart-card readers for cards that can be used not only for access control but also for other purposes, such as in identity checking, transportation, cashless vending and government applications.

- Contact and contactless readers with dual-use version
- Features keypad versions
- LCD display for text-based user feedback and instructions
- Provides compatibility with Philips® MIFARE® DESFire formatted cards, designed to bring high-speed and high-security communications between the card and reader

Symmetry Series 800 Readers

Symmetry 800 Readers employ the very latest proximity, contactless smart card and fingerprint reading technologies and enable the widest range of compatibility.

- Features wall switch, micro and keypad versions
- Available in a variety of colors and styles
- The S813 fingerprint reader is a cost-effective solution for high-security applications
- Provides compatibility with:
 - Philips MIFARE DESFire formatted cards
 - Cards using Texas Instruments™ Tag-it™ inlays
 - HID format cards
 - US Government PIV & CAC-NG cards

The Benefits

- Easy to install, with standard mountings
- High performance and reliability, many with lifetime warranty
- Supervised communications
- Attractive designs
- Easy-to-follow instructions
- The full range of reader technologies from a single supplier
- High degree of integration with third party hardware and software
- Connection distance of 3000ft (1km) from multiNODE



Hardware Integration

Integration of systems throughout an organization is often a key business requirement. The open platform provided by our security management system allows high levels of integration with other third-party systems.

- Easy graphical management of call requests Displays status of all calls

Open Video Management solution for Symmetry ENVS, market leading DVR and IP cameras

- Live video review of up to 72 concurrent cameras per client PC
- Managed, indexed storage of MPEG-4 video from the Symmetry ENVS and selected IP cameras
- Event-based recording integrated with Intrusion and Access Control
- Alarms Management including video loss alarms
- Graphical Maps with interactive video control
- Review stored video from DVR, IP camera archive and video servers
- Instant-replay of recently recorded video
- Record Now feature allows guards to initiate recording
- Flexible on Event presentation of video
- Motion detection supported as standard from the Symmetry ENVS

Alarm Panel Integration

- Intrusion detection system integration
- Alarm control and acknowledgement from SMS

Third-Party Readers

- Supports third-party
- Wiegand readers
- Including hand, iris, face and fingerprint recognition

Open Integration Platform Management

- Five separate options: Data Connect, XML Open Integration Module, Building Control, and Directory Sync Management
- Card Data Import/Export options enable card data to be imported and exported to third-party databases (e.g. human resources databases)
- Allows import/export to a Microsoft® SQL database
- Encryption prevents unauthorized data from being imported
- Selectable card data for export
- BACnet interface provides support for integration with other building management systems
- Serial Device Interface

Other Optional Management Modules

- Threat Level Manager™
- Smart Card Encoding
- Web Access including SSL encryption
- Guard Patrol
- Muster Management (Safety Roll Call)
- Magstripe Card Encoding

AMAG Technology Inc. is a subsidiary of Group 4 Technology Ltd. ©COPYRIGHT AMAG TECHNOLOGY INC. 2008

G4Tec is a Microsoft Gold Certified Partner for Security Solutions. Symmetry, ENVS, and TLM are registered trademarks of Group 4 Technology Ltd. Microsoft is a registered trademark of Microsoft Corporation. All other brand names and product names are trademarks or registered trademarks of their respective owners.

Information contained in this literature is representative only and does not form part of a contract. Our policy is one of continuous product improvement and details may vary without notification. We are committed to providing defect-free products and services to our customers in partnership with equally committed suppliers and authorized dealers.

PART NUMBER
00/07



A G4Tec Company



AMAG Technology, Inc.
20701 Manhattan Place
Torrance, CA 90501

Phone: (800) 889-9138
Fax: (310) 834-0685
Website: www.amag.com