

SYMMETRY™ VIDEO MANAGEMENT

Symmetry Video Management is an innovative open video management platform for both analog and digital video. The platform supports the migration from analog to digital for any size organization.

Support is provided for video from market leading digital video recorders and network cameras.

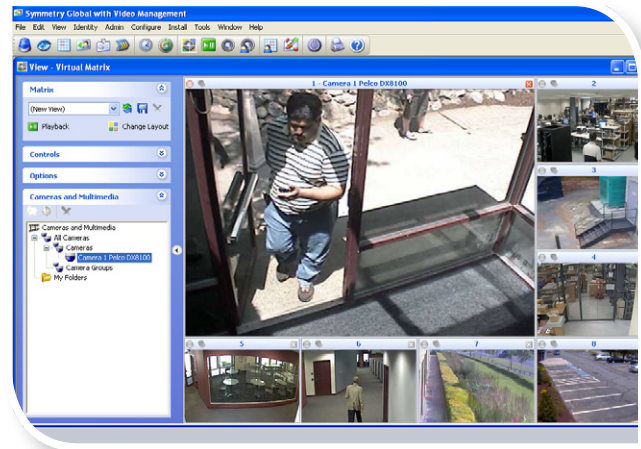
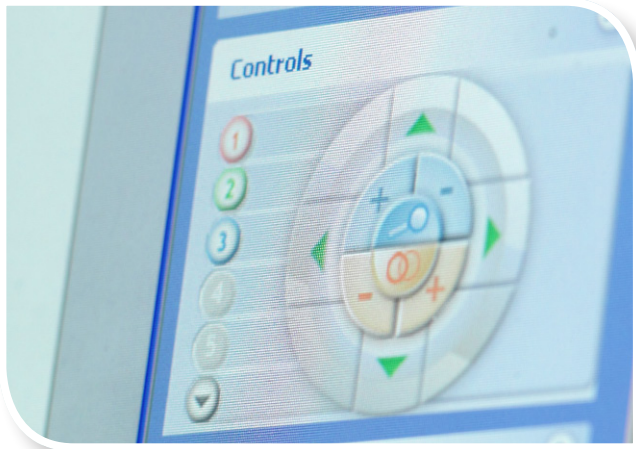
The Symmetry system provides a complete solution including powerful options for live video management and the distributed NVR storage of video from the encoders and MPEG-4 and H.264 network cameras.

Symmetry Video Management can expand the scope of the security management system into a truly seamless solution for access control, intrusion, identity management, biometrics and video.

Events and alarms from Access Control and Intrusion Systems can generate index points on recordings for easy replay of alarm incidents.

KEY FEATURES

- Open Architecture Video Management solution for encoders, market leading NVR, DVR and network cameras
- Seamless integration with all other modules of the Symmetry Security Management System
- Live video review of up to 72 concurrent cameras per client PC
- Managed, indexed storage of MPEG-4 and H.264 video from encoders and network cameras
- Event tagging integrated with Intrusion and Access Control
- Alarms Management including video loss alarms
- Graphical Maps with interactive video control
- Review stored video from DVR or network camera storage on Symmetry NVR
- Instant-replay of recently recorded video
- Record Now feature allows guards to initiate recording
- Flexible on Event presentation of video
- Motion detection supported as standard
- Integrated HTML Web Page support in virtual matrix
- Operator permissions for individual cameras and stored views
- Automated sequencing facility
- Supports Pan Tilt Zoom and camera control
- Management Reports
- Export video to CD or DVD for archiving
- Still image capture and export from MPEG-4 and H.264 video
- Graphical time and calendar based configuration of frame rate, resolution, presets and other features
- Multi-user system for up to nine PCs
- Multiple Client Monitor Support
- Activity logging and audit trail of configuration changes and operator activity
- Multi-company partitioning



SPECIFICATIONS

Computer Requirements:

- Client PC and Server specifications requirements depend on number of cameras to be viewed or recorded. Please see the Symmetry Video Design Guide for details.
- Server specification depends on number of cameras. Refer to the Symmetry Video Design Guide.

Storage:

DVR data remains on the DVR; encoders and selected MPEG-4 and H.264 cameras archive to open selection of hard drives, storage arrays, Network Attached Storage or Hierarchical Storage Management solutions.

VIDEO HARDWARE SUPPORT

Digital Video Encoders

Models from the following market leading manufacturers:

- Bosch Divar
- Dedicated Micros
- OnSSI
- Milestone
- Nice
- Pelco
- Verint

Network Cameras

Selected H.264 and MPEG-4 cameras:

- Arecont
- AXIS
- Bosch
- Sony
- Panasonic

ORDERING INFORMATION

- Requires Symmetry Professional or Symmetry Enterprise v6.0 or later pre-installed
- Symmetry client licenses allow full video operation. Additional client licenses available
- Available with 4, 8, 16, 32, 128 or 256 camera licenses to suit requirements
- NVR storage module available for recording of data from encoders or MPEG-4 and H.264 network cameras

PURCHASING INFORMATION

- VID-VMS-V6.2
- VID-MOD-V6.2
- VID-NVR-V6.2
- VID-CAM-004-V6.2
- VID-CAM-008-V6.2
- VID-CAM-016-V6.2
- VID-CAM-032-V6.2
- VID-CAM-064-V6.2
- VID-CAM-128-V6.2



AMAG Technology

sales@amag.com

www.amag.com